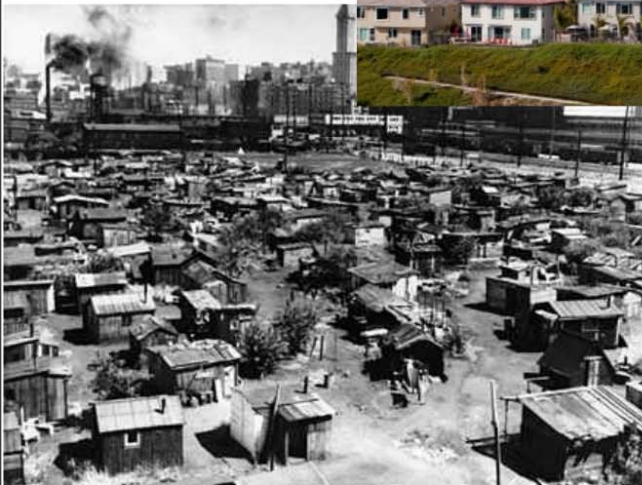


What are some social classes in our society?

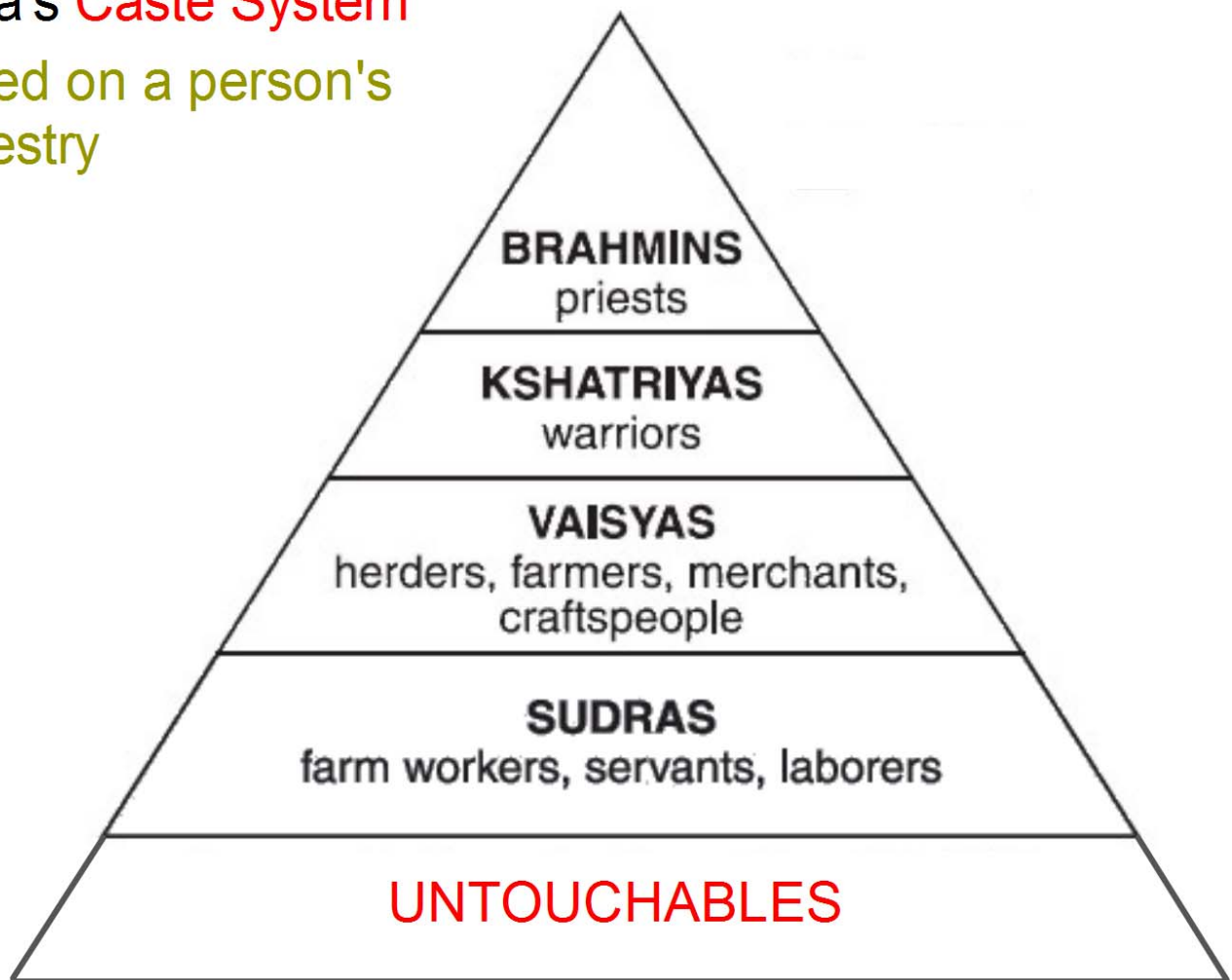
How are we placed into these classes?

Are people able to "move" or "switch" classes?



India's Caste System

Based on a person's ancestry

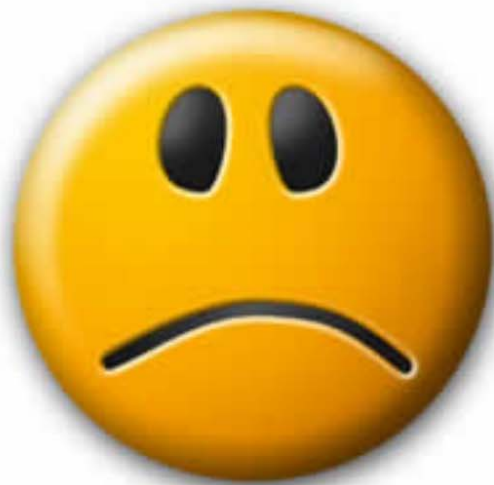


India's caste system was not even.

You could not associate with other people from another caste.

You could not marry someone from another caste.

Certain jobs went to people within certain castes.



During the early 1900's, India was under the control of Great Britain.



Great Britain highly MISTREATED the Indians. The British looked down upon the Indians and saw them as inferior.

Since the Indians were not strong enough to fight with force, how did they fight back?

