

Bell Ringer

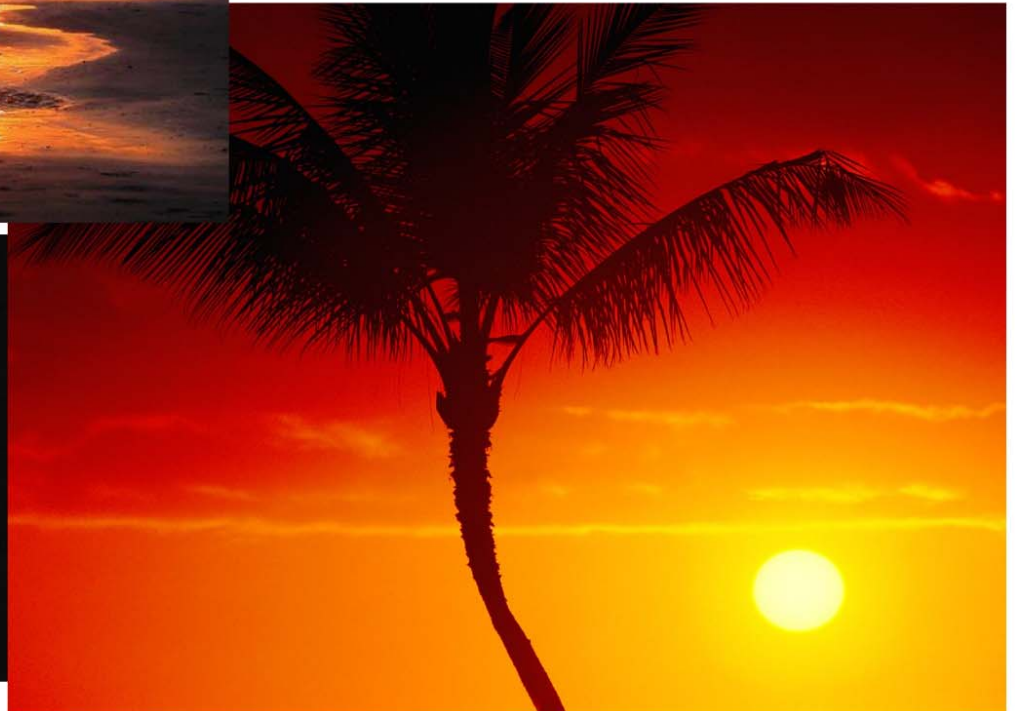
They have discovered that _____ percent of the earth is water.

- A. 50% B. 25% C. 70% D. 80%

They have also discovered that most of the water is...

- A. Salt Water B. Fresh Water

Today we are going to talk about people and warmth... What do you think this means in terms of Geography?

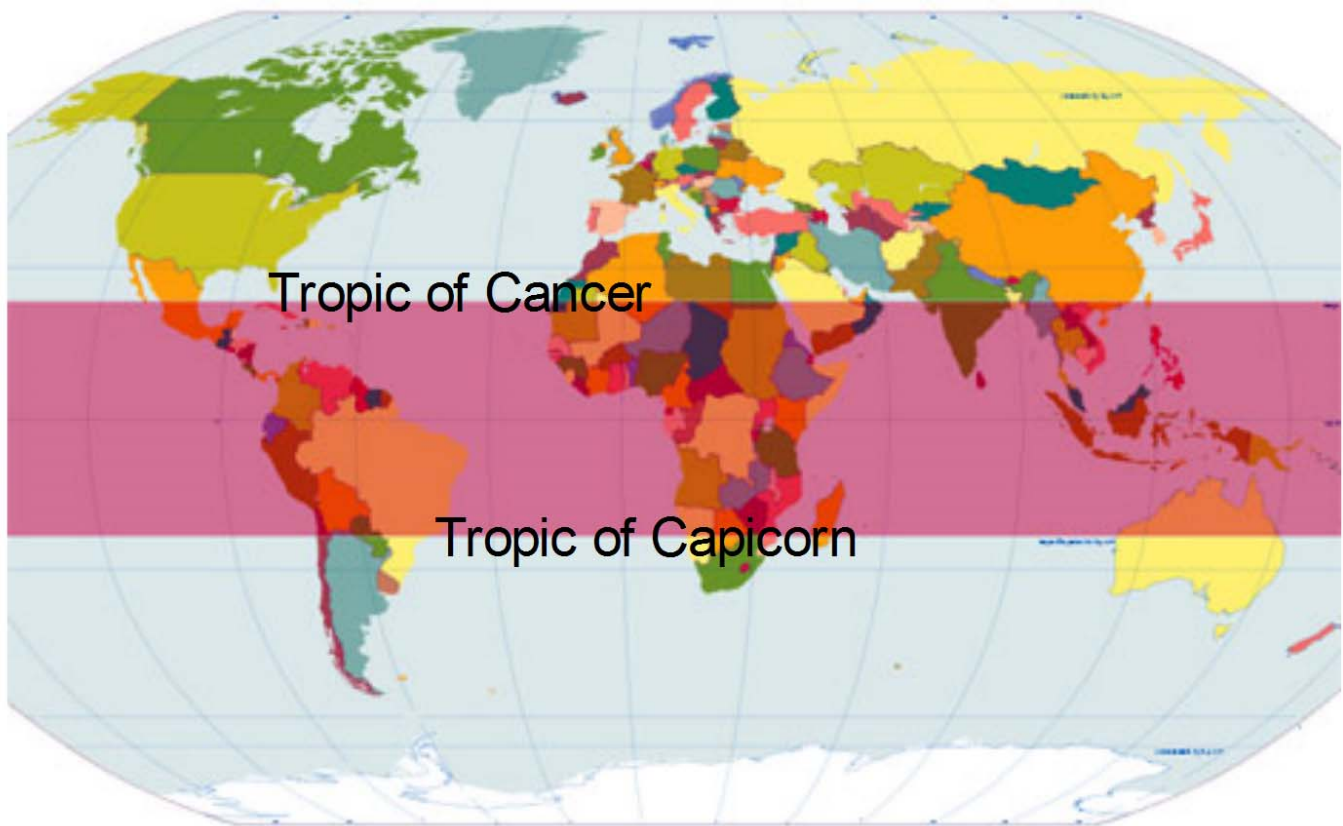


How would you like
to vacation in the
"Tropics"?



Where are the tropics?

Why are these areas called the "Tropics"?



Areas near the equator are warmer ...
This is true with one exception...

When would an area in the tropics be cooler?

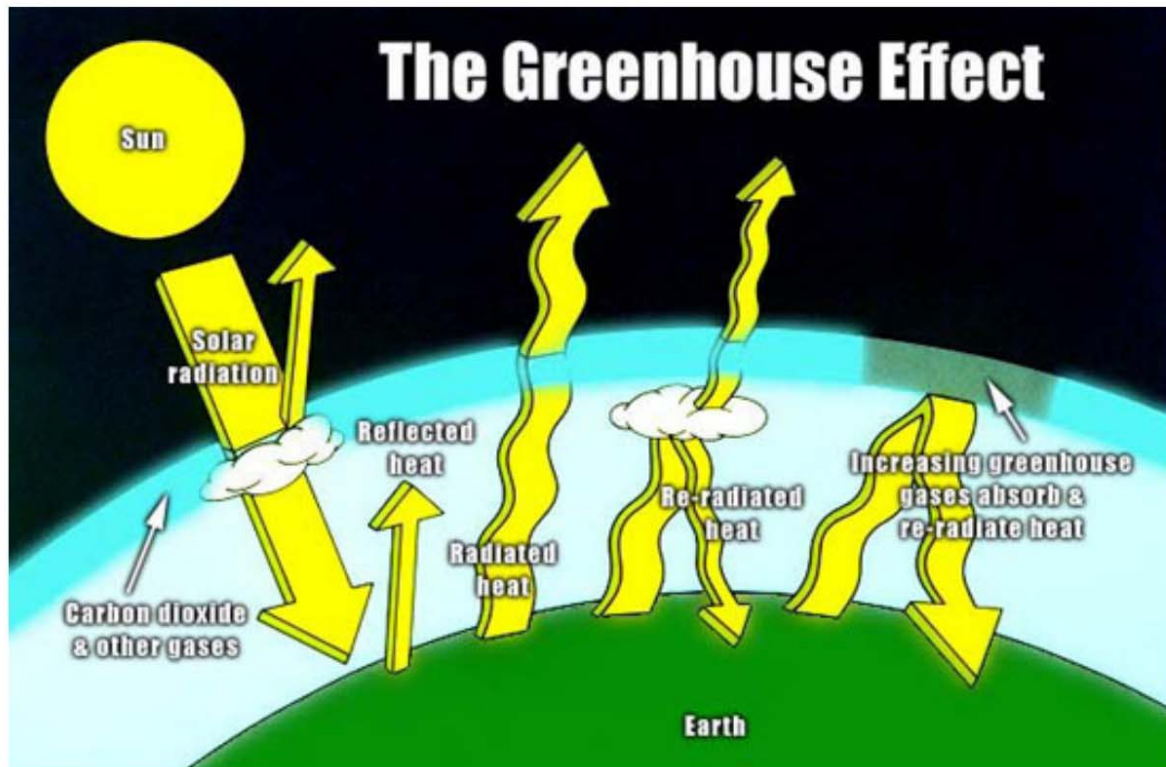


Since we are talking about "Warmth"...

What is another type of warmth that we, as geographers, study...?
(Hint - This one is man made)

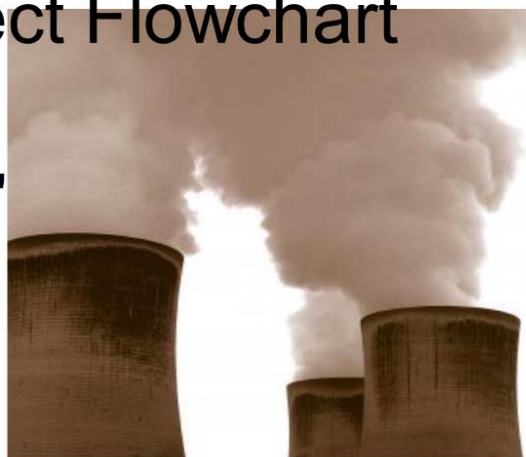


Greenhouse Effect - The warming of earth from a build up of gases



Green House Effect Flowchart

1. Gases we release form a "film" around atmosphere



2. Due to these gases, sunlight can enter but can't escape as it would normally...



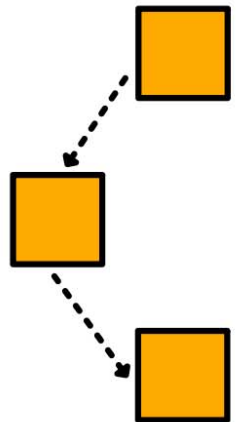
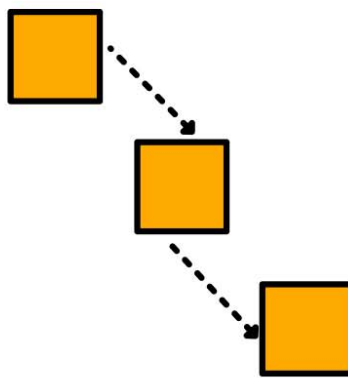
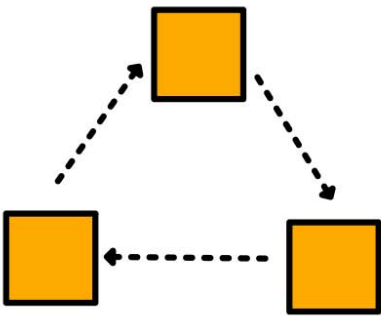
3. Temperature Rises



Directions:

On the back of your hand out, create a flow chart that accurately shows the "greenhouse effect" process.

Examples...



Continuing with our "warm" theme...

Why do farmers like it warm?



Farmers and geographers have discovered it is better to NOT plant the same crops in the same location every year. Why?



Which of these soils looks healthier?

Crop Rotation - Changing what is planted in a field to avoid using up all of the minerals



What happens if the soil lacks nutrients?

1. Plants will struggle to grow....



2. Erosion

Erosion - wind or water carries soil away leaving land less fertile than before



Check for Understanding...

3

X

3

X

3